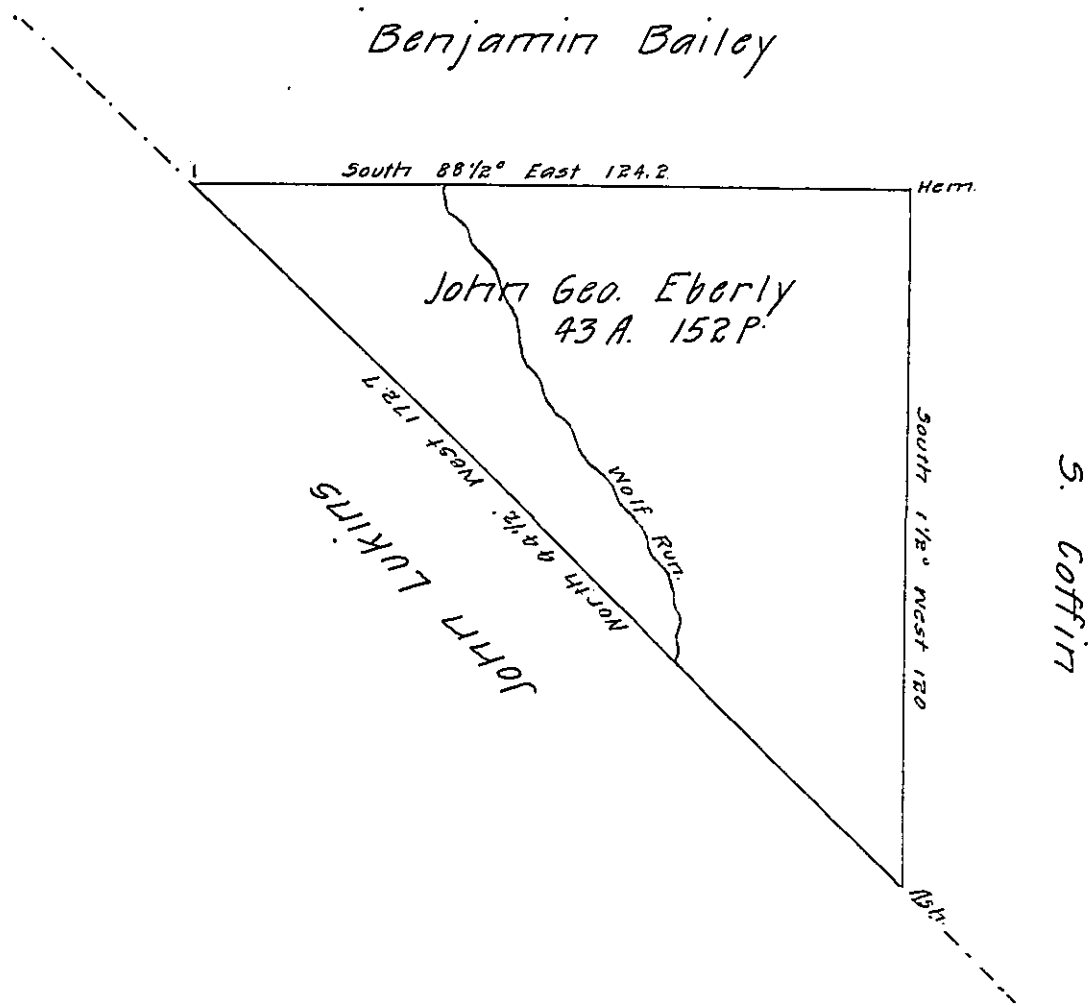


A17-160

Benjamin Bailey



Draught of a tract of land in Wilmot tp. Bradford Co.
 Situate on the head waters of Wolf Run a branch of the
 Mahooparry — Containing 43 acres 152 perches & 6 pr ct.
 Surveyed June 9th 1853 to Jno. Geo. Eberly in pursuance by
 a wt. dated July 13th 1852.

E. G. Nichols. C.S.

To J. Porter Brawley S.G.

IN TESTIMONY that the above is a copy of the original remaining on file in
 the Department of Internal Affairs of Pennsylvania, made
 conformably to an Act of Assembly approved the 16th day of
 February, 1833, I have hereunto set my Hand and caused
 the Seal of said Department to be affixed at Harrisburg,
 this twenty-first day of May 1908.

Henry Howell

Secretary of Internal Affairs.